

By the Numbers

1992

ESTABLISHED

33

TOTAL PUBLIC ENTITIES
IN FUND

1.5 percent

AVERAGE RATE
INCREASE OVER
PAST 5 YEARS

\$18,105,894

FUND SURPLUS

\$5,600,000

4-YEAR AVERAGE
DIVIDEND PAYMENT

1,363

EMPLOYEES

3,680

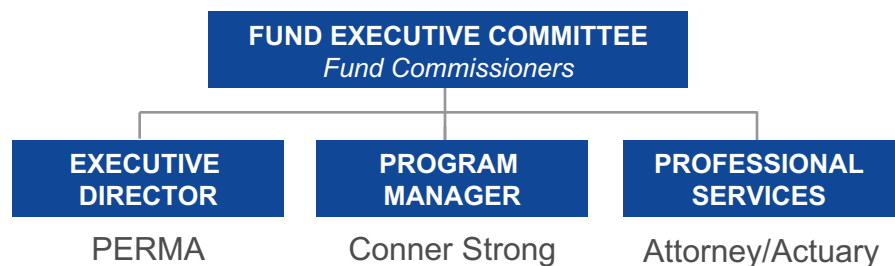
MEMBERS

PROFILE:

Central Jersey Health Insurance Fund

The Central Jersey Health Insurance Fund is available to primarily serve governmental entities and school districts in Warren, Hunterdon, Somerset, Mercer, Monmouth and Ocean Counties. The Fund contracts with Aetna & QualCare (medical), Express Scripts (pharmacy) and Delta Dental of NJ (dental).

Like all PERMA Health JIFs, each public entity appoints a Fund Commissioner to represent them. These individuals can have as little or as much involvement in shaping the Fund's overall direction as they choose. Depending on their needs, the Executive Director and Program Manager can manage every aspect of the Fund, from day-to-day functionality to vendor selection to long-range forecasting.



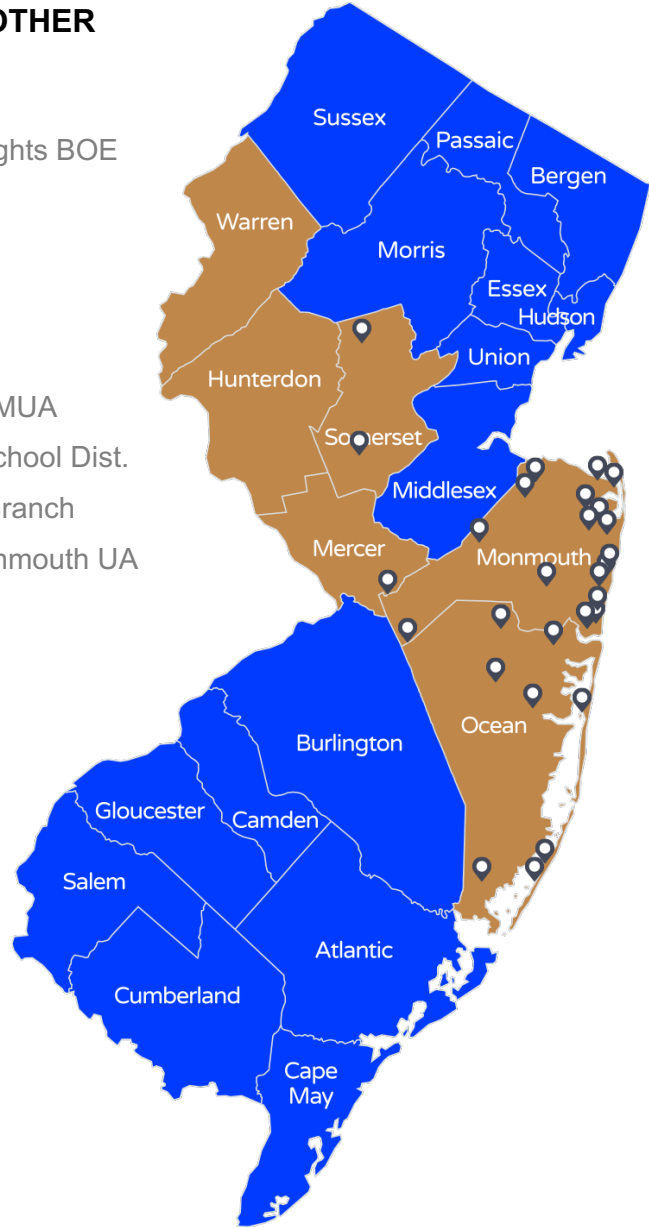
Our Wisdom, Your Advantage

The Central Jersey Health Insurance Fund, like all PERMA Health JIFs, has a proven track-record of fiscal responsibility. The reason is the decision-making process combines our decades of public entity expertise with your needs. Together, the result is a Fund that delivers year-after-year.

You're in Good Company

SCHOOL DISTRICTS/MUNICIPALITIES/OTHER

- Aberdeen
- Allentown
- Asbury Park
- Atlantic Highlands
- Barnegat Light
- Bedminster
- Brick Twp. Housing Auth.
- Brielle
- Eatontown Sewerage Auth.
- Englishtown
- Harvey Cedars
- Highland Elementary School
- Jackson
- Lakewood
- Lakewood Twp. Fire Dept.
- Manasquan
- Manasquan Reg. Sew. Auth.
- Manchester
- Matawan
- Montgomery
- Plumsted
- Neptune
- Red Bank
- Seaside Heights BOE
- Shrewsbury
- Ship Bottom
- South River
- Spring Lake
- Toms River MUA
- Tuckerton School Dist.
- West Long Branch
- Western Monmouth UA



Dive in to New Jersey's Safest Health Insurance Pool

Sean Critchley, Esq.
PERMA Risk Management Services
1-973-659-6511
Sean@HiFundNJ.com